

Jet Edge Style Parts



Catalog



Universal Minerals, Inc.

TABLE OF CONTENTS

CUTTING HEADS	
CUTTING HEADS	4
ORIFICE TECHNOLOGY	
ORIFICE TECHNOLOGY	5
ABRASIVE NOZZLES	
ABRASIVE NOZZLE	7
JET EDGE INTENSIFIER REPLACEMENT PARTS	
JET EDGE INTENSIFIER REPLACEMENT PARTS	8
SWIVELS	
SWIVELS	12
UHP FITTINGS AND ADAPTERS	
FITTINGS/ADAPTERS	14
TOOLS	
TOOLS	21
FILTERS	
FILTERS	22
HYDRAULIC COMPONENTS	
HYDRAULIC COMPONENTS	23
HOPPERS	
HOPPERS	24
BRICKS	
BRICKS	25



Universal Minerals, Inc.

6319 Brookhill Dr.
Houston, TX 77087

Tel: 800.528.7086
Fax: 713.797.1014

www.universalminerals.com



“I have been using the diamond eductor abrasive jet cutting head (10/30 combination) for 6 months. Since installation, the only parts we’ve changed out are focusing nozzles. The diamond orifice is still providing a very good stream and our focusing nozzles are lasting noticeably longer. We lost track of actual cutting time at around 700 hours. I’m ready to retrofit my other machines.”

— Satisfied Customer

CUTTING HEADS
CUTTING HEADS

Diamond Integral Cutting Head

301024-1-xx	.281"	Single Port
301024-2-xx	.281"	Dual Port
301024-3-xx	.320"	Single Port



Nozzle Body Upgrade Kit
Low Mass to H2O Jet
Hi-Performance

302009-1



Nozzle Body • Hi-Performance

100037-1



Nozzle Body • Low Mass

100046-1



"The Integral" Diamond Eductor
Single Port

301022-xx	.320"	Abrasive Nozzle
301029-1-xx	.281"	Abrasive Nozzle



The Jet Edge
Permalign 2
Cutting Head

JE100150



"The Integral" Eductor
Retaining Collet

100171-1	.320"	Nozzle
100171-281	.281"	Nozzle



Nozzle Nut • Low Mass

100039-1



Nozzle Nut • Hi-Performance

100038-1



Valve Body

100048-1	Hi-Performance
100048-2	Legacy Threaded



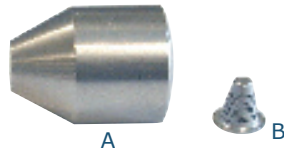
Valve Body • On/Off Valve
Ultra-II

JE100048-3



Jet Edge Adaptor
Adapts Integral Eductor to
Jet Edge System

JE22015



Short Stop Filter Assembly
301026-1 • 1/4"

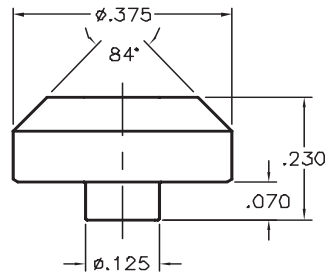
A - Adapter Insert	100192-1
B - Short Stop Filter	400096-1



Short Stop Filter Assembly
301026-2 • 3/8"

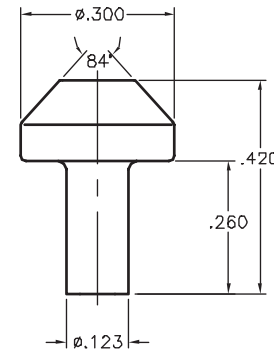
A - Adapter Body	100157-1
B - Short Stop Filter	400096-1

CUTTING HEADS



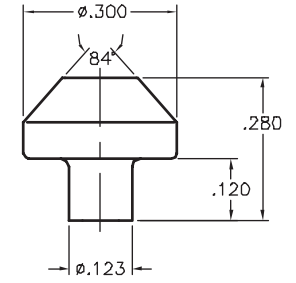
1 Standard Nozzle Assembly

201101-xx	Diamond	.0xx"
202101-xx	Sapphire	.0xx"
203101-xx	Ruby	.0xx"



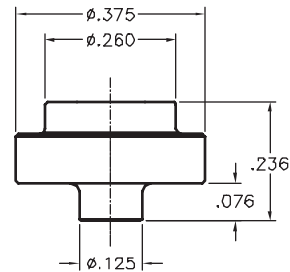
2 LM-II-L Nozzle As-

201201-xx	Diamond	.0xx"
202201-xx	Sapphire	.0xx"
203201-xx	Ruby	.0xx"



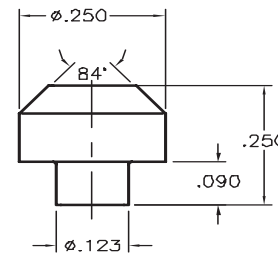
3 LM-II-S Nozzle As-

201202-xx	Diamond	.0xx"
202202-xx	Sapphire	.0xx"
203202-xx	Ruby	.0xx"



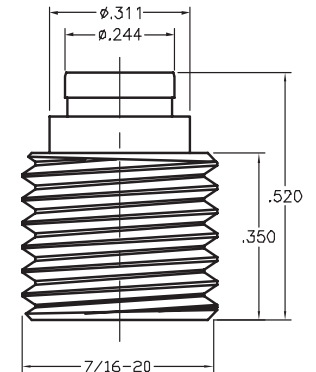
8 P-II Step Nozzle Assembly

201601-xx	Diamond	.0xx"
202601-xx	Sapphire	.0xx"
203601-xx	Ruby	.0xx"



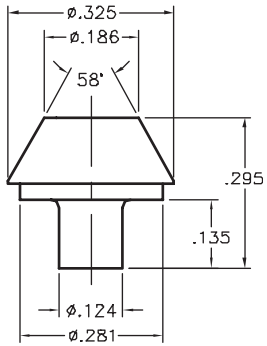
9 Bullet Nozzle Assembly

201801-xx	Diamond	.0xx"
202801-xx	Sapphire	.0xx"
203801-xx	Ruby	.0xx"



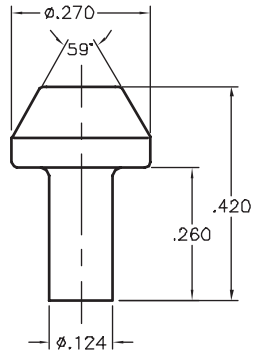
10 JE Threaded Nozzle Assembly

201901-xx	Diamond	.0xx"
202901-xx	Sapphire	.0xx"
203901-xx	Ruby	.0xx"



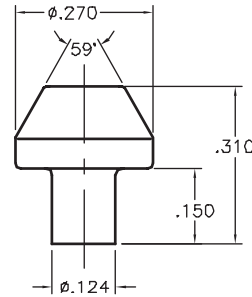
4 AUTOLIGN Nozzle Assembly

201301-xx	Diamond	.0xx"
202301-xx	Sapphire	.0xx"
203301-xx	Ruby	.0xx"



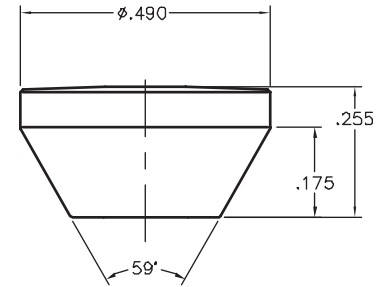
5 LS-I Nozzle Assembly

201401-xx	Diamond	.0xx"
202401-xx	Sapphire	.0xx"
203401-xx	Ruby	.0xx"



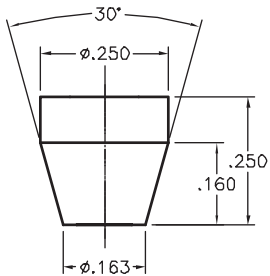
6 LS-II Nozzle Assembly

201402-xx	Diamond	.0xx"
202402-xx	Sapphire	.0xx"
203402-xx	Ruby	.0xx"



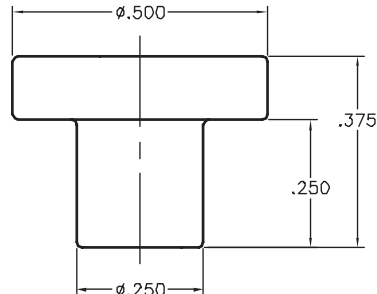
7 P-III Nozzle Assembly

201501-xx	Diamond	.0xx"
202501-xx	Sapphire	.0xx"
203501-xx	Ruby	.0xx"



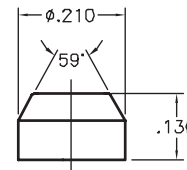
11 JE PL-I Nozzle Assembly

201910-xx	Diamond	.0xx"
202910-xx	Sapphire	.0xx"
203910-xx	Ruby	.0xx"



12 JE PL-II T-Mount Nozzle Assembly

201920-xx	Diamond	.0xx"
202920-xx	Sapphire	.0xx"
203920-xx	Ruby	.0xx"



13 Mini-Jet Nozzle Assembly

201810-xx	Diamond	.0xx"
202810-xx	Sapphire	.0xx"
203810-xx	Ruby	.0xx"

Every high pressure connection has the potential to produce ultra small metal shavings which may plug a diamond orifice, or damage a sapphire or ruby orifice. If a poor jet stream is encountered, particles in the orifice may be the cause. These particles may be washed away by rinsing under a faucet or utilizing a pair of tweezers to remove the foreign matter.

ORIFICE TECHNOLOGY

ABRASIVE NOZZLES

ABRASIVE NOZZLES



Abrasive Nozzle • FL • .281" O.D.

- FL30 .030" I.D. 3" Long
- FL35 .035" I.D. 3" Long
- FL40 .040" I.D. 3" Long
- FL 50 .050" I.D. 3" Long

Longer Life Abrasive Nozzle
Roctec 500

Available upon request



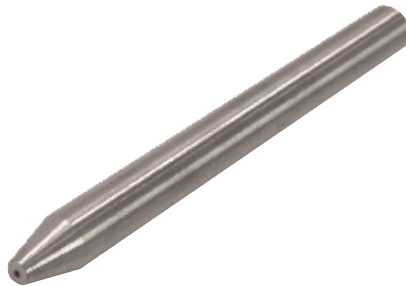
Abrasive Nozzle • JE • .250" O.D.

- JE30 .030" I.D. 3" Long
- JE40 .040" I.D. 3" Long
- JE45 .045" I.D. 3" Long
- JE50 .050" I.D. 3" Long



Abrasive Nozzle • KMT • .371" O.D.

- IR30 .030" I.D. .3" Long
- IR40 .040" I.D. .3" Long



Abrasive Nozzle • OMAX • .315" O.D.

- OM30 .030" I.D. 4" Long
- OM42 .042" I.D. 4" Long



Abrasive Splash Guard

- P/N 62121-1 for .281" FL
- P/N 62121-2 for .250" JE
- P/N 62121-3 for .371" IR
- P/N 62121-4 for .312" OM

ABRASIVE NOZZLES

To order, call (PH.) 800.528.7086 or (FAX) 713.797.1014

REPLACEMENT PARTS



CHECK VALVE BODY ASSEMBLY
(FOR 1" PLUNGER)
PN# JE105027

CHECK VALVE BODY ASSEMBLY
(FOR 7/8" PLUNGER)
PN: JE29672

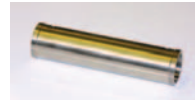


CHECK VALVE BODY
(FOR 1" PLUNGER)
PN# JE104874

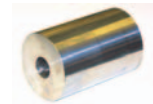
CHECK VALVE BODY
(FOR 7/8" PLUNGER)
PN: JE45826



POPPET BODY HIGH PRESSURE CHECK TUBE
7/8" PN# JE35368
1" PN# JE105023



SPACER TUBE
7/8" PN# JE35363
1" PN# JE35576



HP CYLINDER (75S, 100D, 150D)
PN# JE45394

HP CYLINDER (30 THRU 75D)
PN# JE45395
(* ** * Similar to part shown above.)

PN# JEK1027-1
H.P. SEAL KIT
55K HIGH PRESSURE SEAL KIT
(NO BACK UP RINGS)
KIT INCLUDES:
1EA. SEAL-PLUNGER, HP, 7/8"*
PN# JE35373
1EA. HOOP-SEAL, PLUNGER, 7/8"
PN# JE35364
1EA. O-RING, HP (shipped with seal)
PN# JE35373
1EA. FOOD GRADE LUBRICANT 1/4OZ
PN# JE28339

REPLACEMENT PARTS

PN# JEK1037

H.P. SEAL KIT – (1" DIA. PLUNGER)

55K HIGH PRESSURE SEAL KIT (NO BACK UP RINGS)

****(See picture for PN# JEK1027-1 {prev. pg.})

Same material, different size.)

KIT INCLUDES:

1EA. SEAL-PLUNGER, HP, 1.0"*	PN# JE35574
1EA. HOOP-SEAL, PLUNGER, 1.0	PN# JE35572
1EA. O-RING, HP (shipped with seal)	PN# JE35574
1EA. FOOD GRADE LUBRICANT 1/4 OZ	PN# (N/A)

UMI PART# K2100

BACK-UP RING KIT (1" DIA. PLUNGER) (MAJOR)

KIT INCLUDES:

1EA. BACKUP RING MINI DISK	PN# JE101914
1EA. HOUSING BACKUP RING	PN# JE101913
1EA. ROD SEAL HYDRAULIC	PN# JE25953
1EA. ORING	PN# JE26471
1EA. ORING BACKUP	PN# JE26472



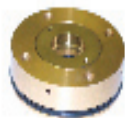
PN# JEK2102

BACK UP RING KIT (7/8" DIA. PLUNGER)(MAJOR)

****(See picture above, Difference between is the size)

KIT INCLUDES:

1EA. BACKUP RING MINI DISK	PN# JE101912
1EA. HOUSING BACKUP RING	PN# JE101911
1EA. ORING	PN# JE26471
1EA. ORING BACKUP	PN# JE26472
1EA. ROD SEAL HYDRAULIC	PN# JE25954



REPLACEMENT PARTS

To order, call (PH.) 800.528.7086 or (FAX) 713.797.1014



PN# JEK2104 INTENSIFIER CHECK VALVE REPAIR KIT
(1" DIA. PLUNGER SIZE)

KIT INCLUDES:

- | | |
|------------------------|--------------|
| 1EA. LP POPPET HOUSING | PN# JE105023 |
| 1EA. LP POPPET | PN# JE104047 |
| 1EA. HP POPPET | PN# JE35662 |
| 1EA. HP SEAT | PN# JE35367 |
| 1EA. HP POPPET SPRING | PN# JE25648 |
| 1EA. CHECK TUBE SCREWS | PN# JE104431 |

****(NOTE: ALWAYS USE LOCK-TITE ON THREADS PRIOR TO INSTALLATION. NO LESS THAN A 242, PREFERRED 271)****

PN# K2105 INTENSIFIER CHECK VALVE REPAIR KIT (7/8" DIA. PLUNGER SIZE)

****(See picture above, Difference between is the size)

KIT INCLUDES:

- | | |
|------------------------|-------------|
| 1EA. LP POPPET HOUSING | PN# JE35368 |
| 1EA. LP POPPET | PN# JE35370 |
| 1EA. HP POPPET | PN# JE35662 |
| 1EA. HP SEAT | PN# JE35367 |
| 1EA. HP POPPET SPRING | PN# JE25648 |
| 1EA. CHECK TUBE SCREWS | PN# JE29525 |

****(NOTE: ALWAYS USE LOCK-TITE ON THREADS PRIOR TO INSTALLATION. NO LESS THAN A 242, PREFERRED 271)****



PN# JEK2106 BACKUP RING SEAL KIT (7/8" PLUNGER)
KIT INCLUDES:

- | | |
|-------------------------|-------------|
| 1EA. ORING | PN# JE26471 |
| 1EA. ORING BACKUP | PN# JE26472 |
| 1EA. ROD SEAL HYDRAULIC | PN# JE25954 |

****UMI PART# K2107

BACKUP RING SEAL KIT (1" PLUNGER)

****(See picture above, Difference between is the size)

KIT INCLUDES:

- | | |
|-------------------------|-------------|
| 1EA. ORING | PN# JE26471 |
| 1EA. ORING BACKUP | PN# JE26472 |
| 1EA. ROD SEAL HYDRAULIC | PN# JE25954 |



PN# JEK2112 HP VALVE ASSEMBLY REPAIR KIT

KIT INCLUDES:

- | | |
|-------------------------------|-------------|
| 1EA. SEAT | PN# JE36826 |
| 1EA. NEEDLE | PN# JE29107 |
| 1EA. NEEDLE BEARING | PN# JE37136 |
| 1EA. HP VALVE SEAL | PN# JE37135 |
| 1EA. HP O-RING | PN# (N/A) |
| 1EA. HP VALVE REPAIR TOOL KIT | PN# JE36873 |

REPLACEMENT PARTS



PN# 12026

SWIVEL BODY ASSEMBLY



PN# K6031 (K1031)

MINOR SWIVEL REBUILD KIT

KIT INCLUDES:

1EA. HP SEAL

PN# 12023

1EA. HOOP SEAL

PN# 12024

1EA. BACKUP RING SEAL

PN# 12025

1EA. O-RING

PN# P2009

1EA. O-RING

PN# P2017



PN# T1019

SWIVEL SEAL INSTALLATION TOOL



PN# K6019(K1019)

MAJOR SWIVEL REBUID KIT

KIT INCLUDES:

1EA. HP SEAL

PN# 12023

1EA. HOOP SEAL

PN# 12024

1EA. BACKUP RING SEAL

PN# 12025

1EA. O-RING

PN# P2009

1EA. O-RING

PN# P2017

1EA. SHAFT SEAL

PN# P7011

1EA. THRUST WASHERS

PN# P7012

1EA. NEEDLE BEARING

PN# P7013

REPLACEMENT PARTS

To order, call (PH.) 800.528.7086 or (FAX) 713.797.1014

SWIVELS

PART NUMBER 2536
ASSEMBLY, SWIVEL 3/8 HP

THIS ASSEMBLY CONSISTS OF:			NO. REQUIRED
PN#	JE2026	HP SWIVEL (CHUKAR) (T)	(1)
PN#	JE2027	HOUSING BEARING SWIVEL	(1)
PN#	JE5653	BEARING-BALL, RADIAL SWIVEL	(2)
PN#	JE5673	RING-RETAINING, EXTERNAL BASIC	(1)
PN#	JE1655	WASHER-SPACER, SWIVEL S/6 H.P.	(1)

PART NUMBER 2026
SWIVEL HP HIGH/RAIL TABLE (T)

THIS ASSEMBLY CONSISTS OF:			NO. REQUIRED
PN#	JE1453	BODY-SWIVEL BEARING MOUNT 3/8	(1)
PN#	JE1456	SHAFT-SWIVEL 3/8	(1)
PN#	JE1454	CA-SWIVEL, BRG.MOUNT 3/8	(1)
PN#	JE1455	NUT-SEAL, SWIVEL, BRG.MOUNT 3/8	(1)
PN#	JE2023	BODY-SEAL, SWIVEL 3/8	(1)
PN#	JE2024	SEAL, HOOP (SWIVEL)	(1)
PN#	JE2025	RING-BACK-UP, SEAL 3/8 SWIVEL	(1)
PN#	JE45887006	O-RING	(1)
PN#	JE45887017	O-RING	(1)
PN#	JE5675	BEARING-RACE, WASHER, THRUST	(2)
PN#	JE5676	BEARING-THRUST, ROLLER	(1)
PN#	JE5674	SEAL-OIL, 3/8 SHAFT X 5/6 HSG	(1)
PN#	JE5677	BEARING-OILITE, BUSHING .375 X 36 X .75LQ	(1)

SWIVELS

SWIVELS

PART NUMBER K1019
REPAIR KIT, 3/8 SWIVEL, MAJOR

THIS ASSEMBLY CONSISTS OF:

NO. REQUIRED

PN#	JEK45887017	O-RING	(1)
PN#	JEK5674	SEAL-OIL, 3/8 SHAFT X 5/8 HSG	(1)
PN#	JEK5675	BEARING-RACE, WASHER, THRUST	(2)
PN#	JEK5678	BEARING-THRUST, ROLLER	(1)
PN#	JEK2025	RING-BACK-UP, SEAL 3/8 SWIVEL	(1)
PN#	JEK2024	HOOP, SEAL, SWIVEL, 3/8	(1)
PN#	JEK2023	BODY-SEAL, SWIVEL, 3/8	(1)
PN#	JEK45887009	O-RING	(1)

PART NUMBER K1031
REPAIR KIT, 3/8 SWIVEL, MINOR

THIS ASSEMBLY CONSISTS OF:

NO. REQUIRED

PN#	JEK468897009	O-RING	(1)
PN#	JEK2023	BODY-SEAL, SWIVEL 3/8	(1)
PN#	JEK2025	RING-BACK-UP, SEAL 3/8 SWIVEL	(1)
PN#	JEK45887017	O-RING	(1)

SWIVELS

Elbows, tees, and crosses are available for all of the tubing connection sizes. Material is high tensile 316 stainless steel. Standard tubing glands and collars are provided.

GLANDS



COLLARS



PLUGS



Part #	Tube Size	Part #	Tube Size	Part #	Tube Size
P3000	1/4"	P3020	1/4"	P3040	1/4"
P3001	3/8"	P3021	3/8"	P3041	3/8"
P3002	9/16"	P3022	9/16"	P3042	9/16"



HIGH PRESSURE 90° ELBOW

Pressure	Connections						Thickness
P3060	60,000	1/4" O.D.	1 3/8"	1 1/2"	7/8"	7/8"	1"
P3061	60,000	3/8" O.D.	1 3/4"	1 1/2"	1 1/4"	1"	1"
P3062	60,000	9/16" O.D.	2 5/8"	1 7/8"	1 7/8"	1 1/8"	1 1/2"



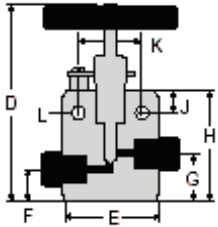
HIGH PRESSURE TEE

Part #	Pressure	Connections				Thickness
P3100	60,000	1/4" O.D. 2"	1 3/8"	1"	3/4"	3/4"
P3101	60,000	3/8" O.D. 2"	1 9/16"	1"	1 1/16"	1"
P3102	60,000	9/16" O.D. 2 5/8"	2 1/8"	1 5/16"	1 3/8"	1 1/2"



4-WAY COUPLING BLOCK

Part #	Pressure	Connections				Thickness
P3080	60,000	1/4" O.D. 2"	1 1/2"	1"	3/4"	1"
P3081	60,000	3/8" O.D. 2 1/8"	2"	1 1/16"	1"	1"
P3082	60,000	9/16" O.D. 2 3/4"	2 5/8"	1 3/8"	1 5/16"	1 1/2"



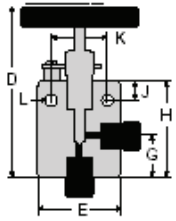
60,000 psi HIGH PRESSURE VALVES

TWO WAY STRAIGHT VALVES

Tubing	Part #	Orifice	D	E	F	G	H	J	K	L	Thickness
1/4 "	P3200	1/16"	5 3/16"	2"	-	1"	2 2/16"	1/2"	1 3/8"	7/32"	1"
3/8"	P3201	1/16"	5 3/16"	2"	-	1"	2 13/16"	1/2"	1 3/8"	7/32"	1"
9/16"	P3202	1/16"	5 5/8"	2 5/8"	-	1 7/16"	2 7/8"	1/2"	1 3/8"	7/32"	1 1/2"

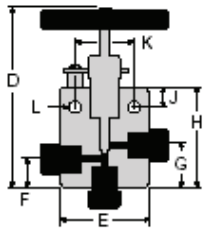
FITTINGS/ADAPTERS

To order, call (PH.) 800.528.7086 or (FAX) 713.797.1014



TWO WAY ANGLE VALVES

Tubing	Part #	Orifice	D	E	F	G	H	J	K	L	Thickness
1/4"	P3206	1/16"	5 3/16"	2"	-	1"	2 2/16"	1/2"	1 3/8"	7/32"	1"
3/8"	P3207	1/16"	5 3/16"	2"	-	1"	2 13/16"	1/2"	1 3/8"	7/32"	1"
9/16"	P3208	1/16"	5 5/8"	2 5/8"	-	1 7/16"	2 7/8"	1/2"	1 3/8"	7/32"	1 1/2"



THREE WAY VALVES TWO PRESSURE CONNECTIONS

Tubing	Part #	Orifice	D	E	F	G	H	J	K	L	Thickness
1/4"	P3209	1/16"	5 3/16"	2"	1"	1"	2 7/16"	1/2"	1 3/8"	7/32"	1"

FITTINGS/ADAPTERS



ADAPTERS

Part #	Pressure	Connections/Description	Length	Hex Size
P3180	60,000	1/4"- 3/8" HP Adapter	1 3/4"	3/4"
P3181	60,000	1/4"- 9/16" HP Adapter	2 1/8"	1 1/8"
P3182	60,000	3/8"-1/4" HP Adapter	1 1/2"	1"
P3183	60,000	3/8"-9/16" HP Adapter	1 1/2"	1"
P3184	60,000	9/16"-1/4" HP Adapter	2 1/8"	1 1/8"
P3185	60,000	9/16"- 3/8" HP Adapter	3/4"	1 3/8"



COUPLINGS

HIGH PRESSURE STRAIGHT COUPLINGS

Part #	Pressure	Connections/Descriptions	Length	Hex Size
P3120	60,000	Coupling 1/4" HP	1 3/4"	1"
P3121	60,000	Coupling 3/8" HP	2"	1"
P3122	60,000	Coupling 9/16"	1 3/8"	1 3/8"



HIGH PRESSURE BULKHEAD COUPLINGS

Part #	Pressure	Connections/Descriptions	Length Hex	Size
P3140	60,000	Bulkhead Coupling 1/4" HP	2"	1"
P3141	60,000	Bulkhead Coupling 3/8" HP	2 3/8"	1 3/8"
P3142	60,000	Bulkhead Coupling 9/16" HP	2 3/4"	1 7/8"

FITTINGS/ADAPTERS

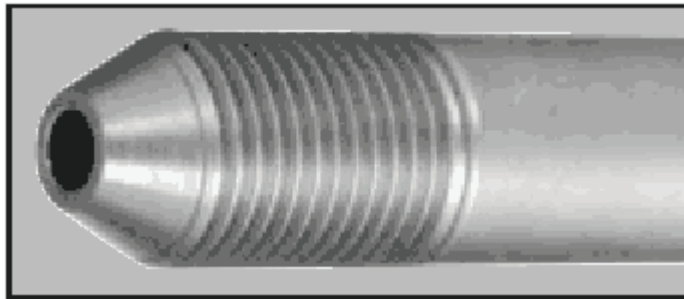
To order, call (PH.) 800.528.7086 or (FAX) 713.797.1014



HIGH PRESSURE TUBING

Tubing is cold drawn, seamless, and is supplied in the 1/8 hard condition (not annealed). Tensile strength is approximately 40% higher than that of annealed tubing. All tubing is manufactured in strict accordance with High Pressure Equipment Company specifications to insure tolerance and bore quality.

Tubing Size	Pressure	Connection	Material	Length	Part #
1/4" O.D. X .083 I.D.	60,000	1/4" HP	304SS	22'	P3290
3/8" O.D. X 1/8" I.D.	60,000	3/8" HP	304SS	22'	P3291
9/16" O.D. X 3/16" I.D.	60,000	9/16" HP	304SS	22'	P3292



NIPPLES

Nipples as shown below are stocked in Types 304 stainless steel. Nipples in lengths other than those shown are supplied upon request. Nipples are not furnished with collars and glands, unless specified at the time of order.

1/4" O.D. X .040" I.D.

Length	Part #
2 3/4"	P3305
6"	P3306
8"	P3308
10"	P3310
12"	P3312

3/8" O.D. X 1/8" I.D.

Length	Part #
3"	P3313
6"	P3315
8"	P3316
10"	P3317
12"	P3318

FITTINGS/ADAPTERS



CONING TOOLS

The coning tool is designed for preparing a "cone" on the ends of Medium, High, and Ultra High Pressure tubing. Included angle of the cone is approximately 57 to 59 degrees. The cutter and collet are interchangeable on all of the assemblies (except 2-HF9 and 2-LF9) to permit changing from one size tubing to the other.

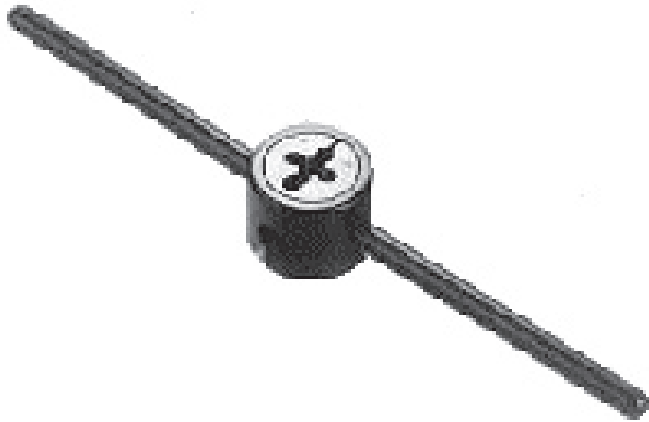
Tubing Size	Tooling	Spare Collets	Spare Cutters
1/4" O.D. X .083 I.D.	P3259	P3262	P3265
3/8" O.D. X 1/8" I.D.	P3260	P3263	P3266
9/16" O.D. X 3/16" I.D.	P3261	P3264	P3267

THREADING TOOLS & DIES

The threading tool is designed for preparing a left-hand thread onto Medium, High, and Ultra High Pressure Tubing ends. The threaded die and guide bushings are interchangeable on all of the assemblies (except 2-MHF2) to permit changing from one size tubing to another.

FITTINGS/ADAPTERS

To order, call (PH.) 800.528.7086 or (FAX) 713.797.1014



Tubing Size	Threading Tool	Spare Threading Dies	Spare Guide Bushings
1/4" O.D.	P3250	P3253	P3256
3/8" O.D.	P3251	P3254	P3257
9/16" O.D.	P3252	P3255	P3258

FITTINGS/ADAPTERS

TOOLS
TOOLS

Industrial Coning and Threading Tool Kit
400046-4



400029-1	Coning & Threading Oil	CL 60	400111-1	Coning Tool Bit	1/4"
400029-2	Coning Bit	1/4" *	400111-2	Coning Tool Bit	3/8"
400029-3	Coning Bit	3/8" *	400111-3	Coning Tool Bit	9/16"
400029-4	Coning Bit	9/16" *	400112-1	Coning Tool Collet	1/4"
400029-5	Coning Tool Collet	1/4" *	400112-2	Coning Tool Collet	3/8"
400029-6	Coning Tool Collet	3/8" *	400112-3	Coning Tool Collet	9/16"
400029-7	Coning Tool Collet	9/16" *	400118-1	Threading Tool Die	1/4"
400029-8	Deburring Tool for HP Tubing		400118-2	Threading Tool Die	3/8"
400046-1	HP Coning & Threading Kit		400118-3	Threading Tool Die	9/16"
	Sno-Trik, 1/4", 3/8" & 9/16" Tubing Sizes		400119-1	Threading Tool Bushing	1/4"
400046-2	HP Coning Tool • Autoclave		400119-2	Threading Tool Bushing	3/8"
	Includes 1/4", 3/8" & 9/16" Collets & Blades		400119-3	Threading Tool Bushing	9/16"
400046-3	HP Threading Tool Kit		400120-1	Coning and Threading Oil • Sulflo #1	32 oz.
	Includes 1/4", 3/8" & 9/16" Bushings & Dies		400121-1	Threading Tool	1/4"
400046-4	Coning & Threading Kit • Autoclave		400121-2	Threading Tool	3/8"
	1/4", 3/8" & 9/16" Tubing Sizes		400121-3	Threading Tool	9/16"

* Sno-Trik Tool, for 400046-1 only



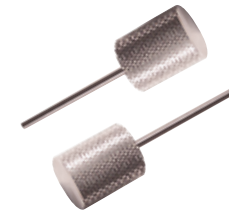
Swivel Installation and Removal Tool Seal Swivel Repair Kit

100186-1



HP Seal Installation Tool Kit • 4-pcs

NEW PART NUMBER



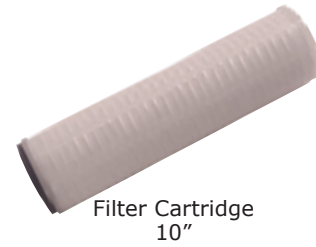
Valve Seal Kit • HP • 2-pcs

302016-1 Kit
100187-E Extraction Tool
100187-IN Insertion Tool

TOOLS

FILTERS
FILTERS

The "Short-Stop" High-Pressure Filter is by far the most effective device available for protecting line-borne contaminants from damaging orifice assemblies. Installing our exclusive filter will help reduce orifice-related downtime and boost productivity. Prevent upstream debris generated by normal wear and maintenance from clogging or prematurely destroying your orifice and increase reliability. This highly effective filter blocks contaminants from the most common sources within any HP waterjet system.



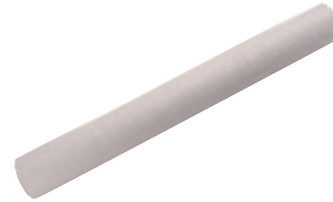
Filter Cartridge
10"

FM-5-975	1 Micron
FM-10-975	10 Micron
FM-035-975	.35 Micron
FM-045-975	.45 Micron



Filter Cartridge
Pleated 20"

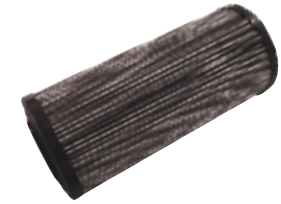
400023-20-45P	.45 Micron
400023-20-1P	1 Micron



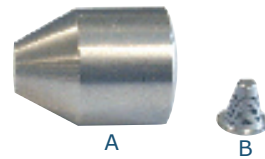
Filter Cartridge
10 Micron • 20"
400023-20-10



Hydraulic Return Filter • 9x
400035-1

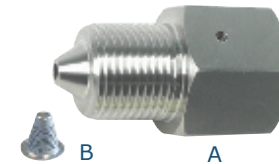


Filter Element • 20x
400041-1



Short Stop Filter Assembly
301026-1 • 1/4"

A - Adapter Insert	100192-1
B - Short Stop Filter	400096-1



Short Stop Filter Assembly
301026-2 • 3/8"

A - Adapter Body	100157-1
B - Short Stop Filter	400096-1

FILTERS

To order, call (PH.) 800.528.7086 or (FAX) 713.797.1014

HYDRAULIC COMPONENTS
HYDRAULIC COMPONENTS



Hydraulic Seal Kit
Ceramic Plunger/White Seal

302007-1 60K
302007-2 40K



Intensifier Hydraulic Seal Kit

302007-3



Pressure Control Valve
Racine

400027-1



Pressure Relief Valve
Parker

400027-2



Hydraulic Return Filter • 9x

400035-1



Filter Element • 20x

400041-1



Relief Valve Cartridge
Hydraulic Manifold • Bosch

400057-1 606045-1



Flat Plate Heat Exchange

HYDRAULIC COMPONENTS

HOPPERS HOPPERS



Universal Minerals Inc. offers three sizes of pressurized abrasive hoppers for the WaterJet Cutting Industry.

6.5 cu.ft. – PN#AB6.5
holds 700 pounds of garnet

20 cu.ft. – PN#AB20
holds 2400 pounds of garnet

40 cu.ft. – PN#AB40
holds 4300 pounds of garnet

Multiple ports available on all sizes.



Manual control

A 1-1/4" blow down for quick tank bleed down.
Manual regulators and controls for simple operation.
(Also available with electronic level sensing and warning devices.)



650 lb. Hopper

Basic hopper for the average job shop.



Two 2-inch Sight Glasses

Two inch sight glass allows you to check the level of the hopper from across the room. One at the mid level and one near the bottom.

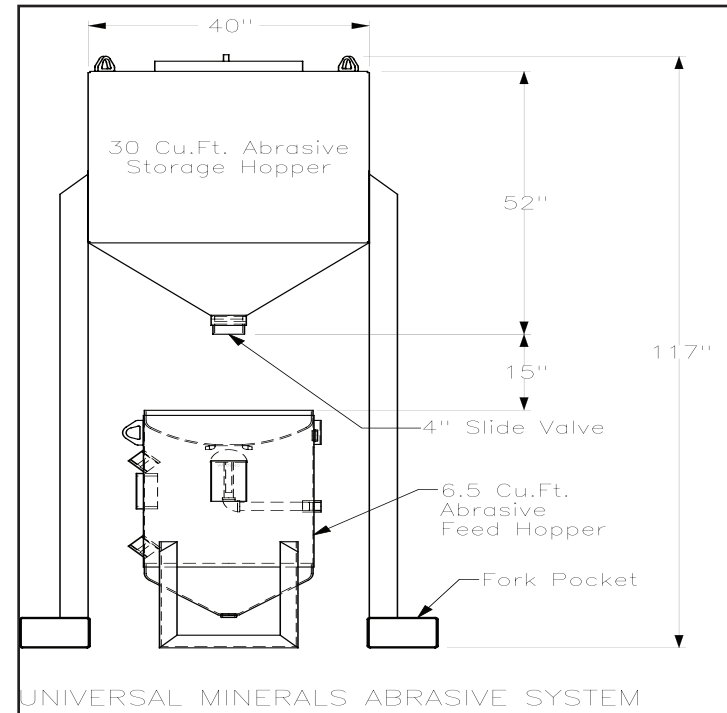


Garnet Screen

Keeps strings, pieces of bags, and other larger particles from entering the Hopper.

Non-pressurized Bulk Storage Hopper

Part #AB30BS



Mini Hopper PN#100248

Pneumatic actuation
Water backflow device
Adjustable metering
wheel

Available with
clear plexiglass full
enclosure.

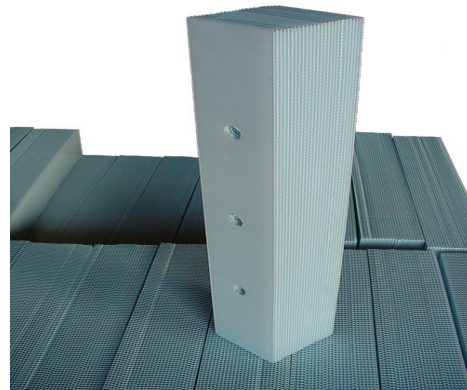
HOPPERS

To order, call (PH.) 800.528.7086 or (FAX) 713.797.1014

BRICKS BRICKS

The UMI Modular bed bricks are fused together instead of being screwed to allow longer surface stability and brick integrity.

- Drains water easily, reduces splashback
- Durable Polypropylene material allows for more cuts, reduces cutting noise and can be recycled
- Design gives an even, flat cutting surface
- Tight tolerance surfaces are great foundation beds for cutting parts from materials like: aluminum, brass, copper, foam plastics, laminates, marble, steel and other materials.



Bricks are thermally-bonded
Can be bolted together

4" x 6" x 24" - PN#WJSM
4" x 6" x 48" - PN#WJLG
Modular Brick



1 pallet - 120 bricks
4" x 6" x 24"
4" x 6" x 48"

or 1 pallet -
60 bricks 4" x 4" x 48"

BRICKS

GENERAL INFORMATION

TERMS: NET 30 DAYS

FOB: Houston, Texas

MINIMUM ORDER: U.M.I. DOES NOT HAVE A MINIMUM ORDER; THERE IS NO ORDER TOO SMALL FOR US TO HANDLE.

EXPEDITE FEE: U.M.I. DOES NOT CHARGE AN EXPEDITE FEE.
THIS IS OUR DAILY ROUTINE SERVICE.

SHIPPING

ALL PACKAGES WILL BE SHIPPED DHL OVERNIGHT UNLESS OTHERWISE STATED BY THE CUSTOMER AT THE TIME OF THE ORDER.
(US ONLY) FED EX INTERNATIONAL IS USED FOR SHIPMENTS OUTSIDE THE U.S.A.

CUSTOMER SERVICE

U.M.I. will be available to you when you need assistance on any matter, any time. If not reached through the office, then through our cell phones. We understand down time. When the machine isn't running, then your not making money. We can be reached through any of the numbers below.

Universal Minerals Inc., 6319 Brookhill, Houston, TX 77087

Inside Sales: Gary Birdwell
Email: garyb@universalminerals.com
Phone: (800) 528-7086
Fax: (713) 797-1014

All parts being shipped domestically will be shipped overnight, unless specified otherwise. Should the part not be in stock at the time of the order, you will be informed of this and delivery schedule at the time of the order. We should have the parts in stock and these parts will be shipped out the same day as long as the order is placed before 3:00 PM.

RETURNING PARTS

If it is necessary to return parts for any reason, please call our office for all necessary paperwork and return number. U.M.I. will issue the customer a credit for those parts not being replaced once the returned parts have been received and inspected.